



YSPPL Legal Flash Monthly News 2026

MARCH

Artificial Intelligence in WSH and Environment

With the advancement in technology, there's an increasing number of organizations adopting artificial intelligence (AI) to improve their workplace safety and health, as well as environmental protection.

Workplace Safety & Health

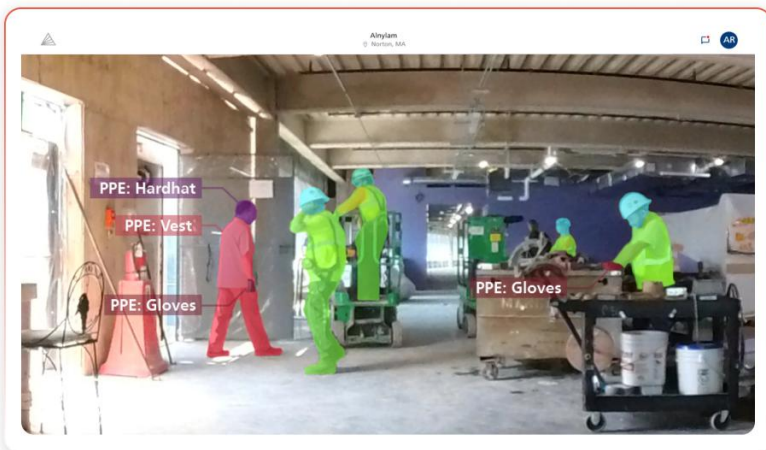
Examples of AI tools that are being leveraged today :

- Ergonomics Assessment

Name	% of Video MSD Risk
A	% of Low: 0% % of Medium: 29% % of High: 50% % of Very High: 0%
B	% of Low: 0% % of Medium: 22% % of High: 0% % of Very High: 0%
C	% of Low: 10% % of Medium: 0% % of High: 0% % of Very High: 0%
Others	% of Low: 10% % of Medium: 43% % of High: 50% % of Very High: 0%
Total	100% 100% 100% N/A

<https://www.tumeke.io/>

- Hazard Identification and safety behaviour observations



<https://nexterobotics.com/insurance-ai>

© Your Safety Partner Pte. Ltd.



KEY HIGHLIGHTS

AI tools are gaining more attention now at the workplaces to help bring organizations to the next level. Instead of relying on human observations, data analysis and interpretations, the tools are taking over these tasks. This allows us to implement quick and effective solutions to address the risks at source.

Today, AI tools that are available readily on the market include :

- Incident Management, generating concise incident summaries, executive updates, suggested root-causes, action recommendations, structured toolbox talk scripts
- Predictive Risk Analytics predict where incidents are most likely to occur, identify risk hotspots by site, process, time, or task, and prioritise interventions before harm happens; and
- Computer-vision that turns video feeds into real-time safety insights through effective hazard detection.

AI can be part of your effective risk management strategy.



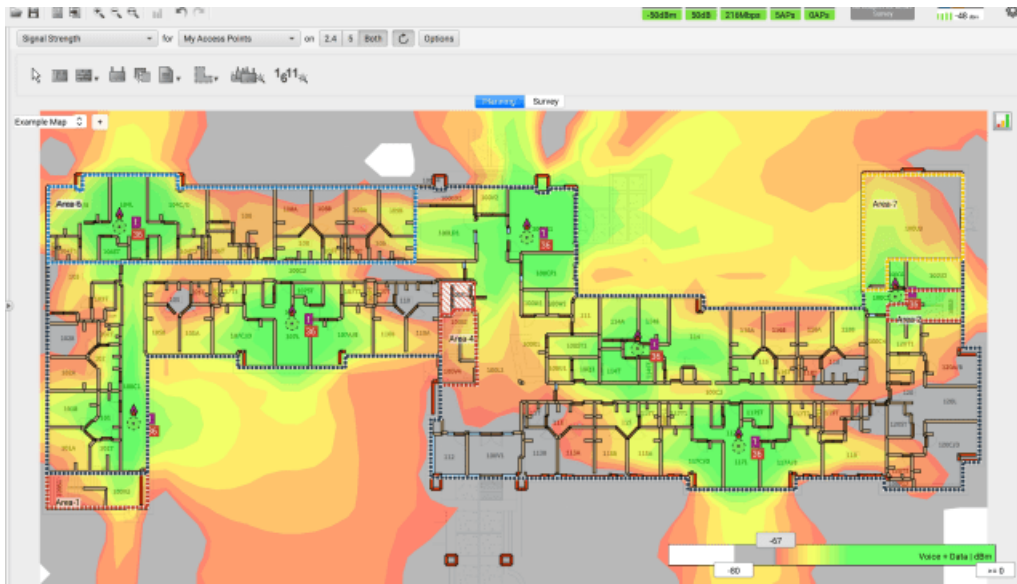
YSPPL Legal Flash Monthly News 2026

MARCH

Artificial Intelligence in Environment

Examples of AI tools :

- Heat map and building energy management system (BEMS)



<https://www.maply.com>



<https://indiaai.gov.in/article/empowering-waste-management-with-ai-a-sustainable-future-for-everyone>

- Advanced computer vision and machine learning algorithms for waste sorting, predictive maintenance to predict potential equipment failures, and “smart” bins.



KEY HIGHLIGHTS

In addition to workplace safety and health, AI is also gaining ground in organizations to improve their environmental sustainability efforts.

Today, AI tools are used to improve :

1. Improve and optimize energy efficiency in buildings e.g. power-hungry data centres;
2. Clean energy transition;
3. Waste management and minimization;
4. Predictive maintenance e.g. machines and equipment;
5. Water management e.g. predicting water demand, detecting leaks, and improving water quality;
6. Route optimization for the logistics and transportation industry, thus reducing fuel consumption;
7. Air pollution predictions by providing real-time data that can inform policy decisions and public health initiatives;
8. Resource usage, reduce waste, and increase yields in the agriculture industry by analysing soil conditions, predict weather patterns, and monitor crop health.